

REMOTE CONTROL MICROPHONE

MH-59A8J

Technical Supplement

©2003 VERTEX STANDARD CO., LTD

EAC61X90A

VERTEX STANDARD CO., LTD.

4-8-8 Nakameguro, Meguro-Ku, Tokyo 153-8644, Japan

VERTEX STANDARD

US Headquarters

10900 Walker Street, Cypress, CA 90630, U.S.A.

International Division

8350 N.W. 52nd Terrace, Suite 201, Miami, FL 33166, U.S.A.

YAESU EUROPE B.V.

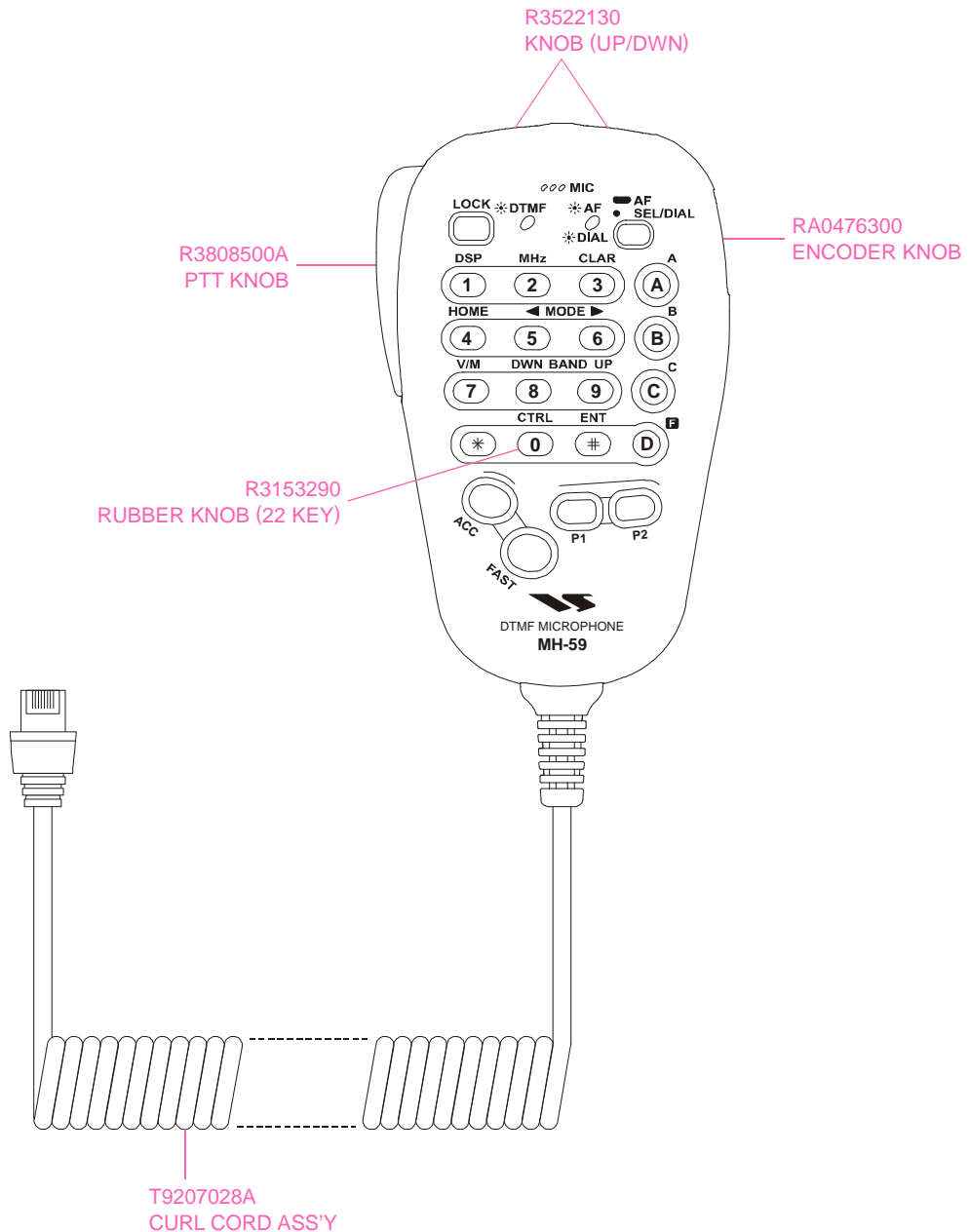
P.O. Box 75525, 1118 ZN Schiphol, The Netherlands

YAESU UK LTD.

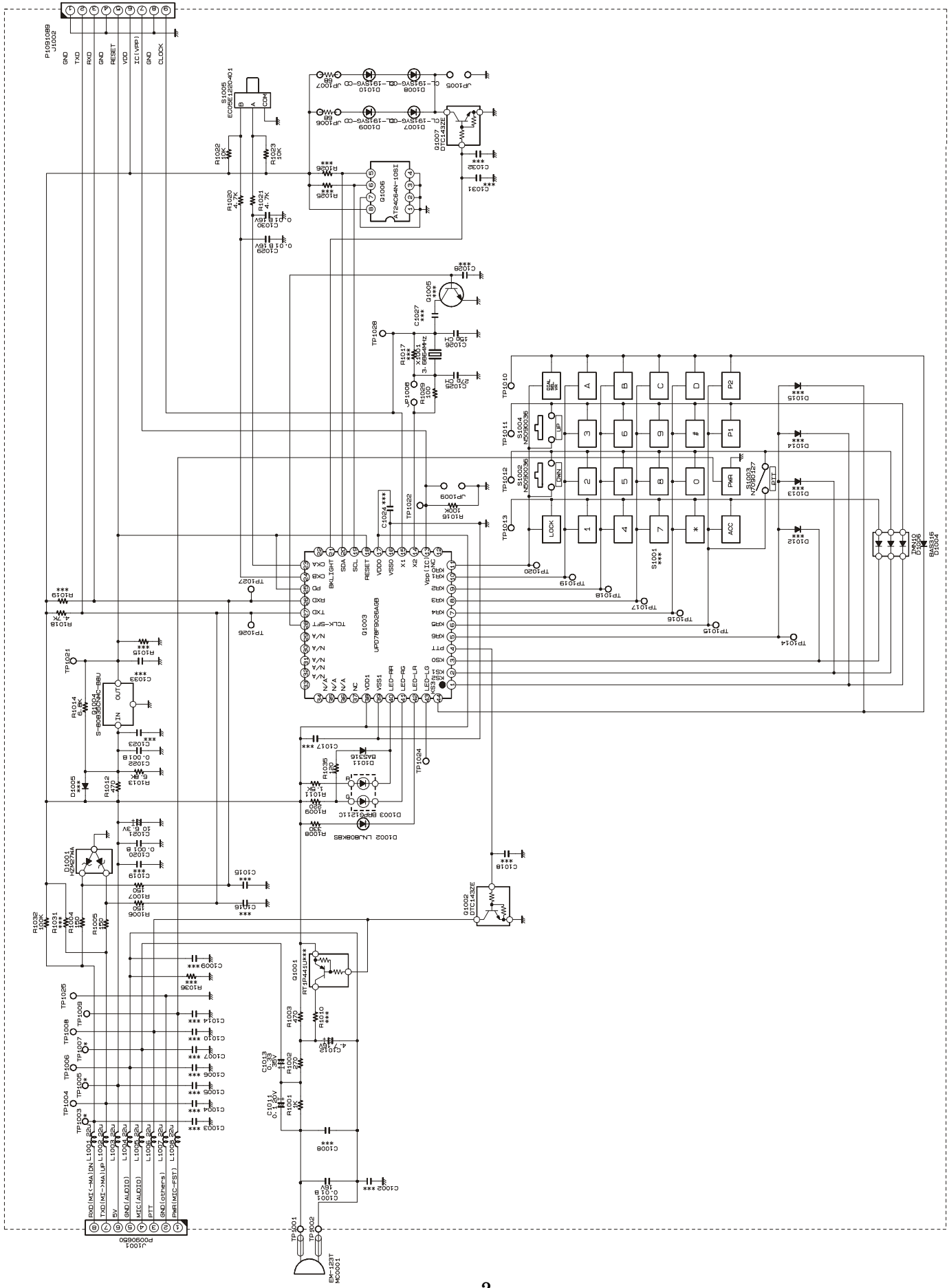
Unit 12, Sun Valley Business Park, Winnall Close
Winchester, Hampshire, SO23 0LB, U.K.

VERTEX STANDARD HK LTD.

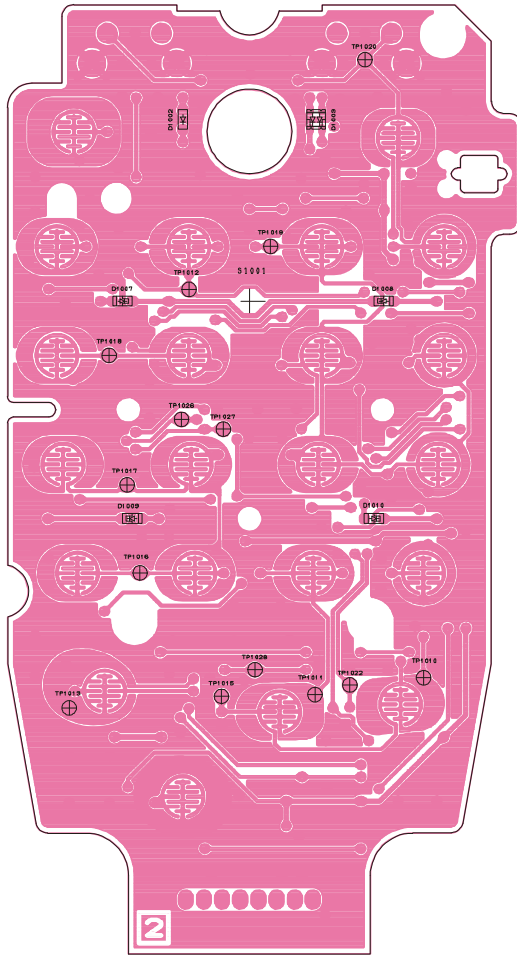
Unit 5, 20/F., Seaview Centre, 139-141 Hoi Bun Road,
Kwun Tong, Kowloon, Hong Kong



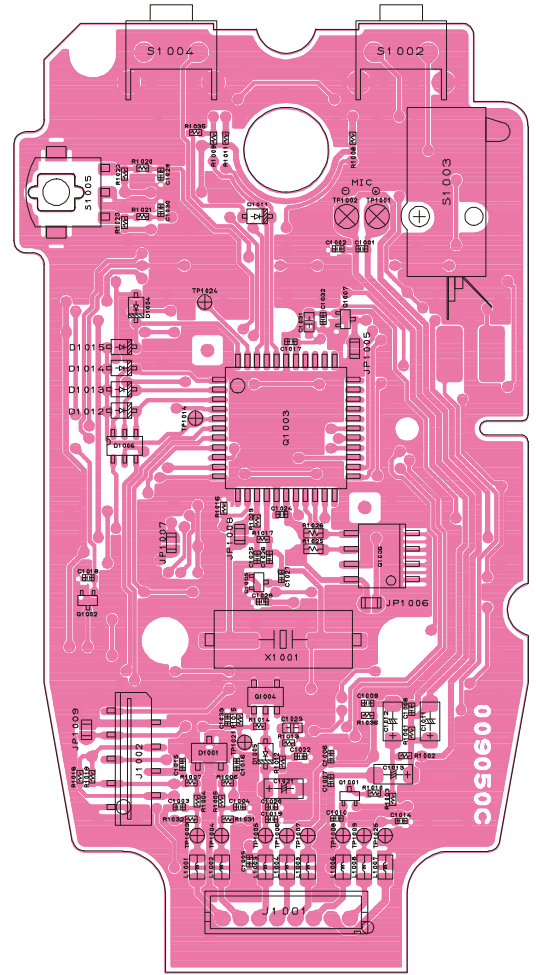
Circuit Diagram



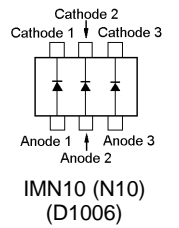
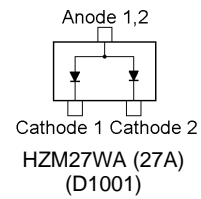
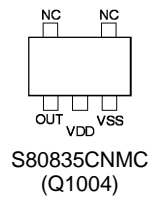
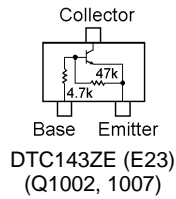
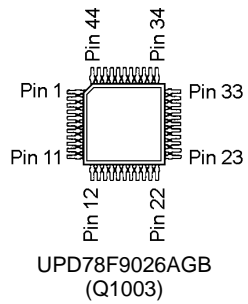
Parts Layout



(Side A)



(Side B)



Parts List

REF	DESCRIPTION	VALUE	V/W	TOL.	MFR'S DESIG	VXSTD P/N	VERS.	LOT	SIDE	LAY ADR
	Printed Circuit Board				AAC61X000	FR0090500		1-	B	
C 1001	CHIP CAP.	0.01uF	16V	B	GRM36B103K16PT	K22128804		1-	B	
C 1003	CHIP CAP.	0.0033uF	50V	B	UMK105B332KW-F	K22178835		1-	B	
C 1004	CHIP CAP.	0.01uF	16V	B	GRM36B103K16PT	K22128804		1-	B	
C 1011	CHIP TA.CAP.	0.1uF	20V		TEMSVA21D104M-8R	K78130020		1-	B	
C 1013	CHIP TA.CAP.	0.33uF	35V		TESVA1V334M1-8R	K78160028		1-	B	
C 1020	CHIP CAP.	0.001uF	50V	B	GRM36B102K50PT	K22178809		1-	B	
C 1021	CHIP TA.CAP.	10uF	6.3V		TEMSVA0J106M-8R	K78080027		1-	B	
C 1022	CHIP CAP.	0.001uF	50V	B	GRM36B102K50PT	K22178809		1-	B	
C 1025	CHIP CAP.	27pF	50V	CH	GRM36CH270J50PT	K22178222		1-	B	
C 1026	CHIP CAP.	15pF	50V	CH	GRM36CH150J50PT	K22178216		1-	B	
C 1029	CHIP CAP.	0.01uF	16V	B	GRM36B103K16PT	K22128804		1-	B	
C 1030	CHIP CAP.	0.01uF	16V	B	GRM36B103K16PT	K22128804		1-	B	
D 1001	DIODE				HZM27WA-TR	G2070530		1-	B	
D 1002	LED				19-215UYOC/S530-A2/TR8	G2070884		1-	B	
D 1003	LED				BRPG1211C-TR	G2070654		1-	B	
D 1004	DIODE				BAS316	G2070716		1-	B	
D 1006	DIODE				IMN10 T108	G2070078		1-	B	
D 1007	LED				19-215UYOC/S530-A2/TR8	G2070884		1-	B	
D 1008	LED				19-215UYOC/S530-A2/TR8	G2070884		1-	B	
D 1009	LED				19-215UYOC/S530-A2/TR8	G2070884		1-	B	
D 1010	LED				19-215UYOC/S530-A2/TR8	G2070884		1-	B	
D 1011	DIODE				BAS316	G2070716		1-	B	
J 1001	CONNECTOR				B8B-ZR	P0090650		1-	B	
J 1002	CONNECTOR				09FMN-BMTTN-TFT	P1091089		1-	B	
JP1001	WIRE ASSY				WHT 35 (3)/(3)	T51903512		1-	B	
JP1002	WIRE ASSY				BLK 35 (3)/(3)	T51003512		1-	B	
JP1006	CHIP RES.	270	1/16W	5%	RMC1/16 271JATP	J24185271		1-	B	
JP1007	CHIP RES.	270	1/16W	5%	RMC1/16 271JATP	J24185271		1-	B	
L 1001	M.RFC	22uH			LK2125 220M-T	L1690335		1-	B	
L 1002	M.RFC	22uH			LK2125 220M-T	L1690335		1-	B	
L 1003	M.RFC	22uH			LK2125 220M-T	L1690335		1-	B	
L 1004	M.RFC	22uH			LK2125 220M-T	L1690335		1-	B	
L 1005	M.RFC	22uH			LK2125 220M-T	L1690335		1-	B	
L 1006	M.RFC	22uH			LK2125 220M-T	L1690335		1-	B	
L 1007	M.RFC	22uH			LK2125 220M-T	L1690335		1-	B	
L 1008	M.RFC	22uH			LK2125 220M-T	L1690335		1-	B	
Q 1002	TRANSISTOR				DTC143ZE TL	G3070102		1-	B	
Q 1003	IC				UPD78F9026AGB-8ES	G1093504		1-	B	
Q 1004	IC				S-80835CNMC-B8U-T2	G1093606		1-	B	
Q 1007	TRANSISTOR				DTC143ZE TL	G3070102		1-	B	
R 1001	CHIP RES.	1k	1/16W	5%	RMC1/16S 102JTH	J24189025		1-	B	
R 1002	CHIP RES.	270	1/16W	5%	RMC1/16S 271JTH	J24189018		1-	B	
R 1003	CHIP RES.	470	1/16W	5%	RMC1/16S 471JTH	J24189021		1-	B	
R 1004	CHIP RES.	150	1/16W	5%	RMC1/16S 151JTH	J24189015		1-	B	
R 1005	CHIP RES.	150	1/16W	5%	RMC1/16S 151JTH	J24189015		1-	B	
R 1006	CHIP RES.	150	1/16W	5%	RMC1/16S 151JTH	J24189015		1-	B	
R 1007	CHIP RES.	150	1/16W	5%	RMC1/16S 151JTH	J24189015		1-	B	
R 1008	CHIP RES.	2.2k	1/16W	5%	RMC1/16S 222JTH	J24189029		1-	B	
R 1009	CHIP RES.	220	1/16W	5%	RMC1/16S 221JTH	J24189017		1-	B	
R 1011	CHIP RES.	1.5k	1/16W	5%	RMC1/16S 152JTH	J24189027		1-	B	
R 1012	CHIP RES.	470	1/16W	5%	RMC1/16S 471JTH	J24189021		1-	B	
R 1013	CHIP RES.	6.8k	1/16W	5%	RMC1/16S 682JTH	J24189035		1-	B	
R 1014	CHIP RES.	6.8k	1/16W	5%	RMC1/16S 682JTH	J24189035		1-	B	
R 1016	CHIP RES.	100k	1/16W	5%	RMC1/16S 104JTH	J24189049		1-	B	
R 1018	CHIP RES.	4.7k	1/16W	5%	RMC1/16S 472JTH	J24189033		1-	B	
R 1020	CHIP RES.	4.7k	1/16W	5%	RMC1/16S 472JTH	J24189033		1-	B	
R 1021	CHIP RES.	4.7k	1/16W	5%	RMC1/16S 472JTH	J24189033		1-	B	
R 1022	CHIP RES.	10k	1/16W	5%	RMC1/16S 103JTH	J24189037		1-	B	
R 1023	CHIP RES.	10k	1/16W	5%	RMC1/16S 103JTH	J24189037		1-	B	
R 1029	CHIP RES.	100	1/16W	5%	RMC1/16S 101JTH	J24189013		1-	B	
R 1032	CHIP RES.	100k	1/16W	5%	RMC1/16S 104JTH	J24189049		1-	B	
R 1035	CHIP RES.	120	1/16W	5%	RMC1/16S 121JTH	J24189014		1-	B	
S 1002	TACT SWITCH				SKHHLN	N5090036		1-	B	
S 1003	MICRO SWITCH				MQS-2AU	N7090127		1-	B	
S 1004	TACT SWITCH				SKHHLN	N5090036		1-	B	
S 1005	ROTARY ENCODER				EC05E1220401	Q9000793		1-	B	
X 1001	XTAL SX-1319	3.6864MHZ			3.6864MHZ	H0103214		1-	B	
JP0001	WIRE ASSY				RED 35 (3)/(3)	T51203512		1-	B	
JP0002	WIRE ASSY				BLK 35 (3)/(3)	T51003512		1-	B	
MC0001	MIC. ELEMENT				EM-123	M3290024		1-	B	